

EUROPEAN HOMESTAY *Intensive Language Homestay in Europe*

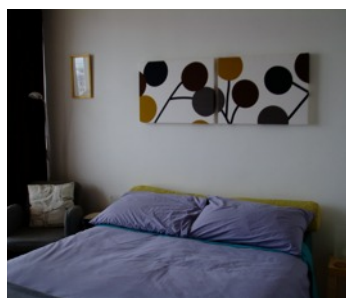


TEACHER: GIL - CITY - LONDON - ENGLAND - [VIEW DETAILED PROFILE](#)

[106EENGREI](#)

TEACHES ENGLISH AS A FOREIGN LANGUAGE

<p>LOCATION</p> <p>In Soho London W1, near Picadilly Circus. Buckingham Palace, Trafalar Square, Hyde Park, the Tate and other art galleries, West End theatres, many pubs all with walking distance.</p>		<p>QUALIFICATIONS</p> <p>CELTA - CERTIFICATE IN ENGLISH LANGUAGE TEACHING TO ADULTS - MA IN ENGLISH</p>			
<p>NEAREST AIRPORT: HEATHROW, CITY, STANSTED, GATWICK, LUTON</p>		<p>TRAIN STATION</p> <p>OXFORD CIRCUS</p>		<p>TEACHING EXPERIENCE -</p> <p>LANGUAGE SCHOOL</p>	
<p>AIRPORT TRANSFER: TAXI DRIVER</p>		<p>COURSE TYPE: 1:1 2:1 - MINI GRP</p>		<p>SPECIALISED SUBJECTS - BUSINESS - ART - ACADEMIA</p>	
<p>COURSES: GENERAL - BUSINESS - ACADEMIC - EXAM PREPARATION</p>		<p>TEACHER INTERESTS</p> <p>Walking, theatre, cycling, swimming, 1960s/70s decor, travelling</p>		<p>STUDENT ACCOMMODATION</p> <p>Double bedroom and own bathroom with TV/DVD and WiFi in 10th floor modernist apartment with fabulous views over London. Only available for those who pay for their own bathroom.</p>	
<p>YOUNG LEARNERS - IF ACCOMPANIED</p>		<p>PRIVATE BATHROOM</p> <p>YES</p>		<p>PETS - NONE</p>	



<p>MEALS: Traditional and international, Special dietary needs catered for.</p>		<p>CREATIVE OPTIONS: Cooking - Theatre - Art</p>	
<p>FRIENDS AND FAMILY WHO CAN CONVERSE WITH STUDENT: - Many friends and family from media, political, education, HR and finance sectors.</p>		<p>ACTIVE OPTIONS: Walking - Cycling - Gym</p>	

